

CE



17708A

Features

- 10µA Ultra High Resolution
- Large Conductor Diameter (30mm)
- AC Current in 5 Ranges (40mA, 400mA, 4A, 40A, 60A)
- Wide Frequency Response (40Hz ~ 1KHz)
- AC A, AC V, Ω and Continuity
- Large 3 ¼ Digit LCD (4000 Count)
- 40 Segment Fast Bargraph Display (30 times/sec.)
- Data Hold and Max/Min Hold
- Relative Measurement
- 600 Vrms Overload Protection in Resistance Range

General Specifications

| | |
|-------------------------------|--|
| Jaw Opening | Cable Dia 30mm. max. (approx.) |
| Battery Type | Two 1.5V SUM-3 |
| Display | 3 ¼ LCD with 40 Segment Bargraph |
| Range Selection | Manual |
| Overload Indication | OL |
| Power Consumption | 15mA (approx.) |
| Low Battery Indication | B |
| Sampling Time | 3 time/sec. (display) 30 time/sec. (bargraph) |
| Operating Environment | -10° to 50°C, RH < 85% |
| Storage Environment | -20°C to 60°C, RH < 75% |
| Altitude | up to 2000M |
| Dimensions | 210 x 72 x 36 mm |
| Weight | 210gms Including Battery (approx.) |
| Accessories | Carrying Case x 1, Users Manual x 1, Battery (installed), Test Leads x 1 pair |

Specifications (23°C ± 5°C)

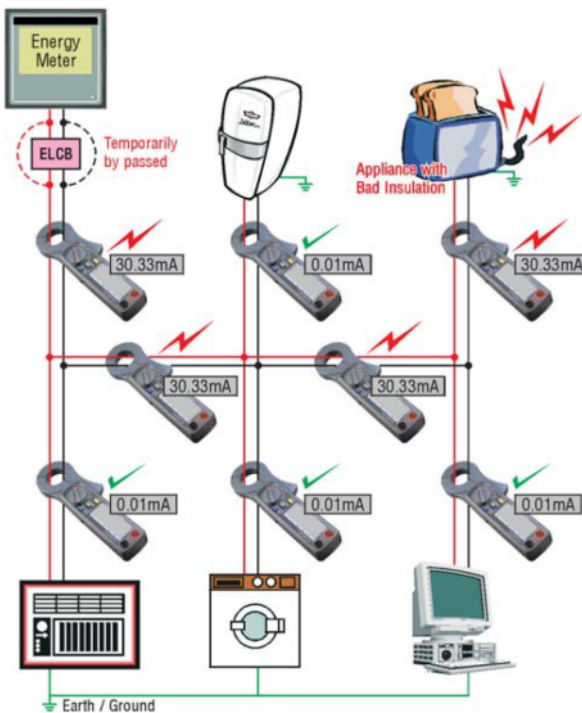
| AC Current | | Accuracy | |
|-----------------|------------|--------------------|--------------------|
| Range | Resolution | 50/60 Hz | Wide (40Hz ~ 1KHz) |
| 40 mA | 10 µA | ± 1.0%rdg ± 3dghts | ± 2.0%rdg ± 5dghts |
| 400 mA | 100 µA | | |
| 4 A | 1 mA | | |
| 40 A | 10 mA | | |
| 60 A (0 ~ 50A) | 100 mA | ± 1.5%rdg ± 3dghts | ± 3.0%rdg ± 5dghts |
| 60 A (50 ~ 60A) | 100 mA | ± 3.0%rdg ± 5dghts | ± 3.5%rdg ± 5dghts |

Though the Meter can Display upto 400A, the Calibration is valid upto 60A

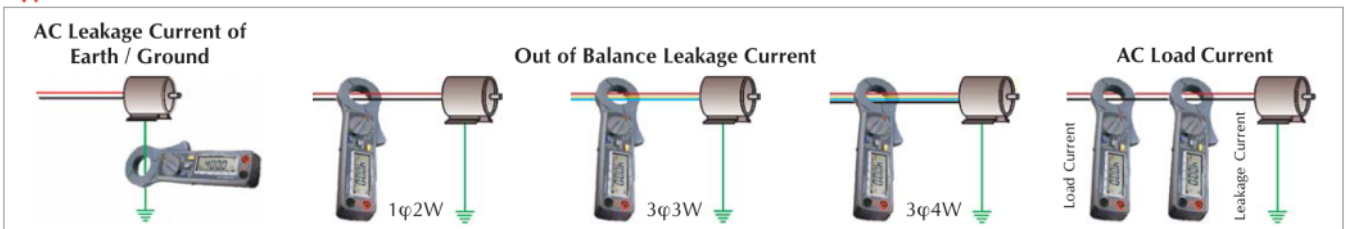
| Resistance (Ω) and Continuity (Open Voltage 0.4V) | | | | |
|---|------------|--------------------|----------|---------------|
| Range | Resolution | Accuracy | Beeping | OL Protection |
| 40 ~ 400Ω | 0.1Ω | ± 1.0%rdg ± 2dghts | < 38.0 Ω | AC 600V |

| AC Voltage (Input Impedance : 10 MΩ) | | | | |
|--------------------------------------|------------|--------------------|--------------------|---------------------|
| Range | Resolution | Accuracy | | Overload Protection |
| | | 50/60 Hz | 40 ~ 1KHz | |
| 400V | 0.1V | ± 1.5%rdg ± 2dghts | ± 2.0%rdg ± 4dghts | AC 800V |

Fault Tracing of Live Installation



Application



Note: Specifications are subject to change.

Tesca Technologies Pvt. Ltd.

IT-2013, Ramchandrapura Industrial Area, Sitapura Extension,
Near Bombay Hospital, Vidhani Circle, Jaipur-302022, Rajasthan, India,
Tel: +91-141-2771791 / 2771792; Email: info@tesca.in, tesca.technologies@gmail.com
Website: www.tesca.in